

Service description

Product: SP400	Service description no: 3125-S008	Ver: 1
-------------------	---	-----------

Symptom

The bearing against the double joint is broken.

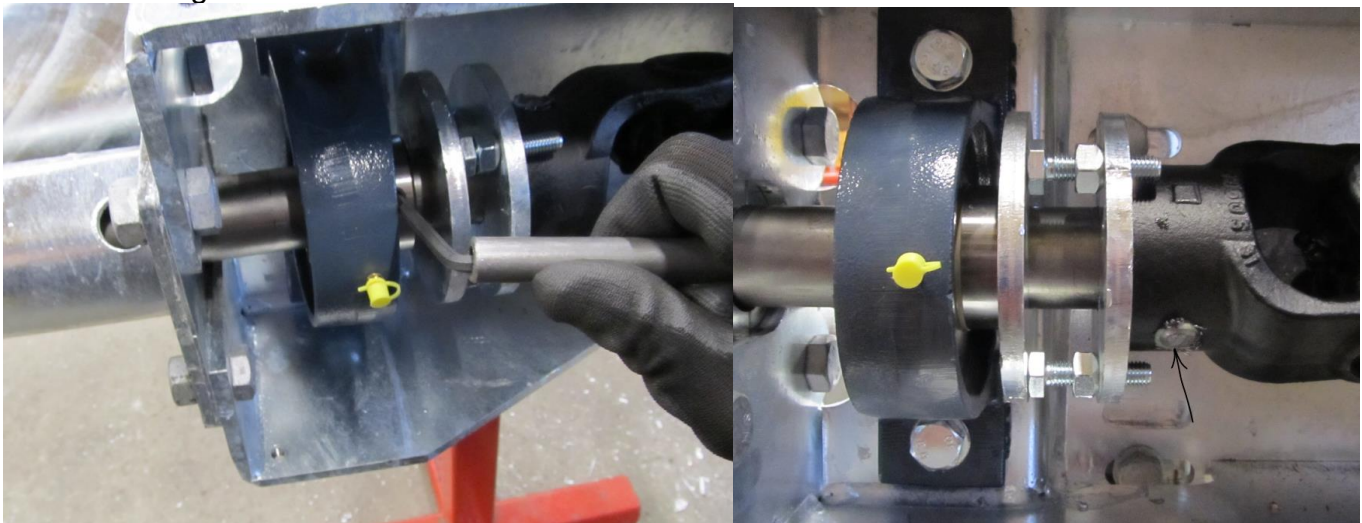
Caused by

It may be something got stuck between the impeller and the pump housing, causing the drive shaft to be pressed down and damaging the bearing. Overlubricating the bearing can cause overheating and damage.

Solution

Change the bearing.

Push out the breaker bolt which attaches the drive shaft to the double joint. Release the set screws on the bearing.



Release the cutter on the pump housing.



Pull the drive shaft and impeller out through the pump housing. The drive shaft will come loose from the double joint and the bearing at the opposite end.

Put a new bearing on the drive shaft and assemble the pump by following the instructions in reverse order.